

**GUILD
BUILDER**

**Thrive
Homes**



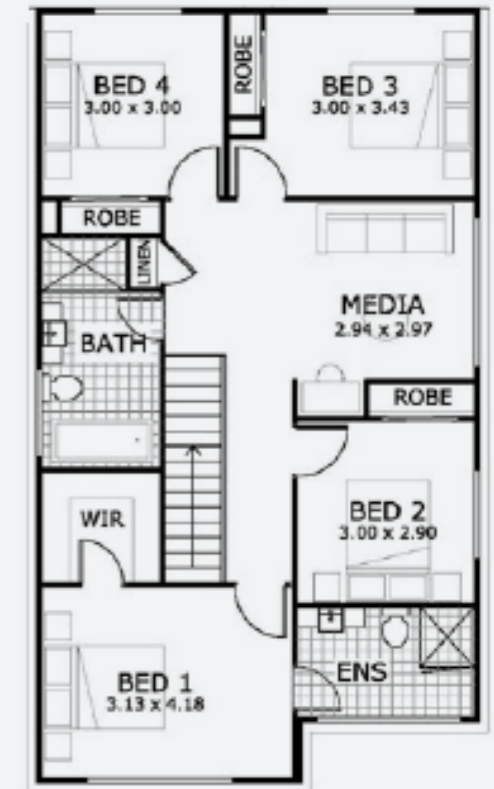
Artist's impression



GROUND FLOOR

AREAS

Living (ground + first floor)	192.46m ²
Garage	32.83m ²
Alfresco	9.66m ²
Porch	1.35m ²
Total	235.76m²



FIRST FLOOR

— ZEPEL 25 —

House and Land Package \$1,028,580*

 235m²   5  3 ● Lot No. 3148 ● Lot Size 337m²

Builder Terms and Conditions apply. Renders/plans are subject to final approval from Googong Township.

*Based on separate house and land contracts.