

**GUILD
BUILDER**

**Thrive
Homes**



Artist's impression

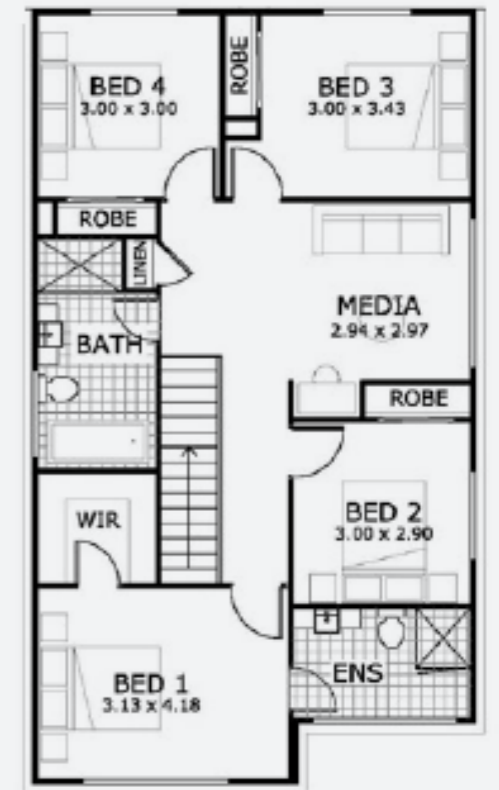


GROUND FLOOR

AREAS

| | |
|-------------------------------|----------------------|
| Living (ground + first floor) | 191.92m ² |
| Garage | 32.83m ² |
| Alfresco | 9.66m ² |
| Porch | 1.35m ² |

Total 235.76m²



FIRST FLOOR

— ZEPHEL 25 —

House and Land Package \$1,044,790*

229m²

 5
 3
 Lot No. 3144
 Lot Size 450m²

Builder Terms and Conditions apply. Renders/plans are subject to final approval from Googong Township.

*Based on separate house and land contracts.