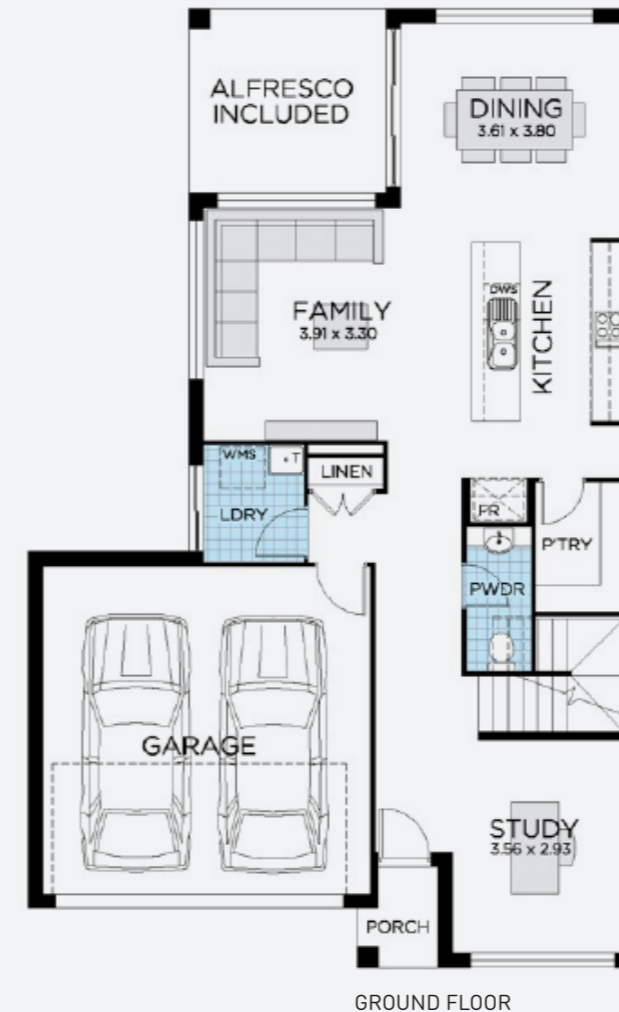


**GUILD
BUILDER**

**Thrive
Homes**



GROUND FLOOR



FIRST FLOOR

AREAS

Living (ground + first floor)	183.51m ²
Garage	33.69m ²
Alfresco	10.23m ²
Porch	2.04m ²

Total 229.47m²

— ALYSIUM 25 —

House and Land Package \$971,740*

 229m²   4  2 ● Lot No. 3147 ● Lot Size 337m²

Builder Terms and Conditions apply. Renders/plans are subject to final approval from Googong Township.

*Based on separate house and land contracts.