

**GUILD
BUILDER**

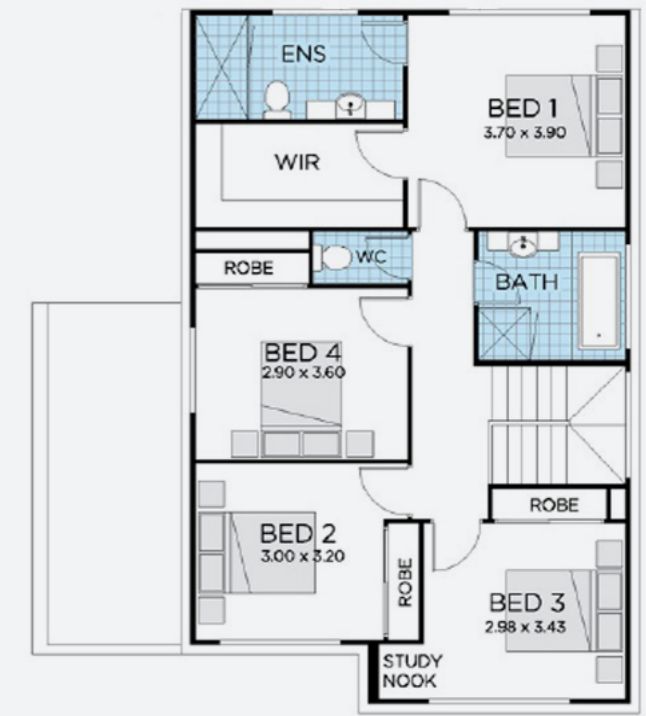
**Thrive
Homes**



Artist's impression



GROUND FLOOR



FIRST FLOOR

AREAS

Living (ground + first floor)	175.00m ²
Garage	33.63m ²
Alfresco	10.81m ²
Porch	1.33m ²
Total	220.77m²

— ALYSIUM 24 —

House and Land Package \$946,620*

220m²

 4
 2
 Lot No. 3145
 Lot Size 337m²

Builder Terms and Conditions apply. Renders/plans are subject to final approval from Googong Township.

*Based on separate house and land contracts.